



# Conway 230

The Conway 230. Complete with a Master Bedroom with Walk-in-robe, an Ensuite, 2 additional bedrooms with built in robes, a bathroom, Media room and an open plan living area adjoining to the Alfresco area for entertaining.

## HOUSE AREAS

Indoor Living	156.79 m <sup>2</sup>
Carport	41.18 m <sup>2</sup>
Outdoor Living	26.56 m <sup>2</sup>
Porch	2.92 m <sup>2</sup>
<b>TOTAL AREA</b>	<b>227.45 m<sup>2</sup></b>

**Indoor Living**



**Outdoor Living**



**Car Accommodation**



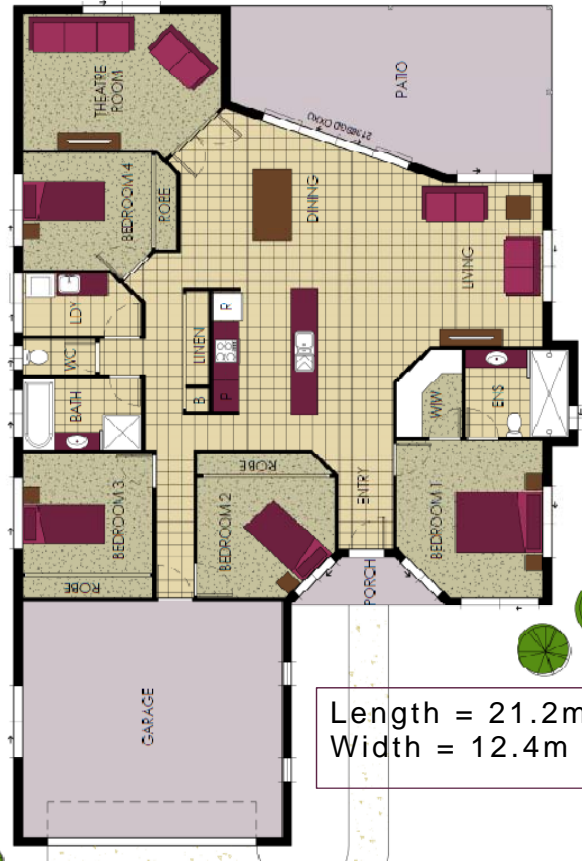
**Bedrooms**



**Bathrooms**



**Living/Media Room**



## TRADITIONAL ROOFLINE



All drawings are artistic impressions only, Any furniture shown on the plan is for illustration purposes only and are not included in the package price. Gemini Homes (QLD) Pty Ltd reserves the right to change prices and inclusions without notice or obligation. All plans are exclusively owned by Gemini Homes (QLD) Pty Ltd and must not be copied or reproduced wholly or in part in any form without written permission of Gemini Homes (QLD) Pty Ltd. This includes making changes with intent to change the plan by 10% or more. Any infringement on this Copyright will result in legal action being taken by Gemini Homes (QLD) Pty Ltd against all persons involved.

For further information please contact Gemini Homes on (07) 49512 664.

[sales@geminihomes.com.au](mailto:sales@geminihomes.com.au)

[www.geminihomes.com.au](http://www.geminihomes.com.au)